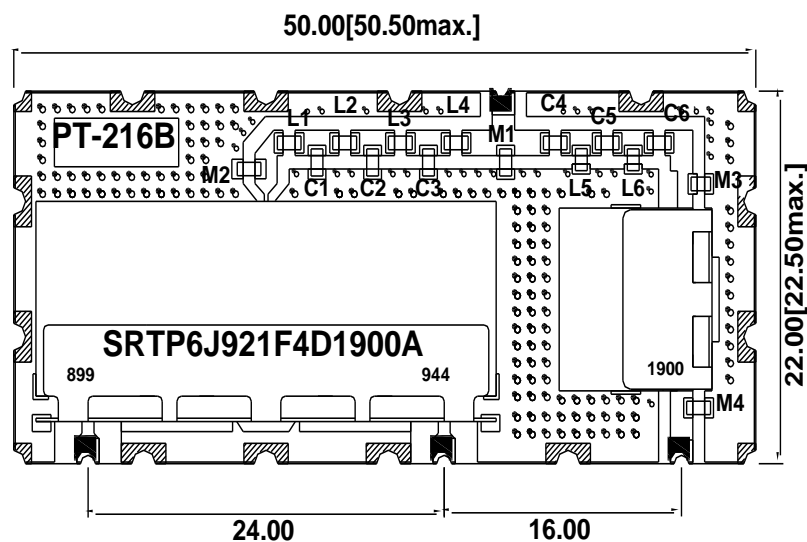


## Electrical Specification

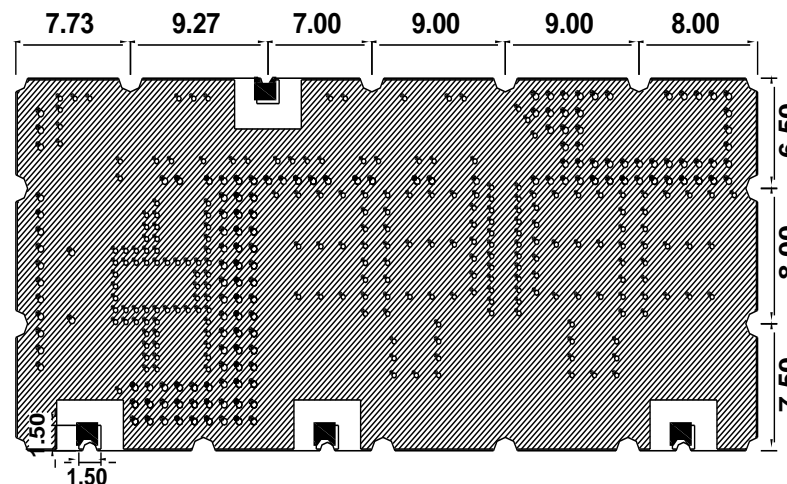
Items	CH 1	CH 2	CH 3	Unit
Center Frequency [fo]	899.0	944.0	1900.0	MHz
Bandwidth [BW]	fo± 10.0 [ 889.0 ~ 909.0 ]	fo± 10.0 [ 934.0 ~ 954.0 ]	fo± 20.0 [ 1880.0 ~ 1920.0 ]	MHz
Insertion Loss in BW	2.7	2.7	2.5	dB max.
Ripple in BW	1.0	1.0	1.0	dB max.
Return Loss in BW				dB min.
V S W R in BW	1.3	1.3	1.3	max.
Attenuation	55 dB min @ [ 934.0 ~ 954.0 ]	55 dB min @ [ 889.0 ~ 909.0 ]	60 dB min @ [ 889.0 ~ 909.0 ]	MHz
<input checked="" type="checkbox"/> Absolute Value	45 dB min @ [ 1880.0 ~ 1920.0 ]	45 dB min @ [ 1880.0 ~ 1920.0 ]	55 dB min @ [ 934.0 ~ 954.0 ]	MHz
<input type="checkbox"/> Relative Value	dB min @ [ ~ ]	dB min @ [ ~ ]	dB min @ [ ~ ]	MHz
	dB min @ [ ~ ]	dB min @ [ ~ ]	dB min @ [ ~ ]	MHz
	dB min @ [ ~ ]	dB min @ [ ~ ]	dB min @ [ ~ ]	MHz
	dB min @ [ ~ ]	dB min @ [ ~ ]	dB min @ [ ~ ]	MHz
Coupler				
Input Power	3.0 W max.			
In/Out Impedance	50 Ω			
Operation Temp. Range	-40°C to +85°C			

## Mechanical Specification

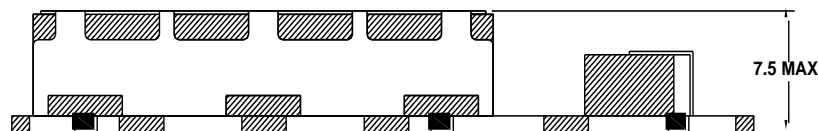
### TOP VIEW



### BOTTOM VIEW



### FRONT VIEW



 I/O PORT

 GROUND

TOLERANCE :  $\pm 0.20$

UNIT : mm

## Plot Data

