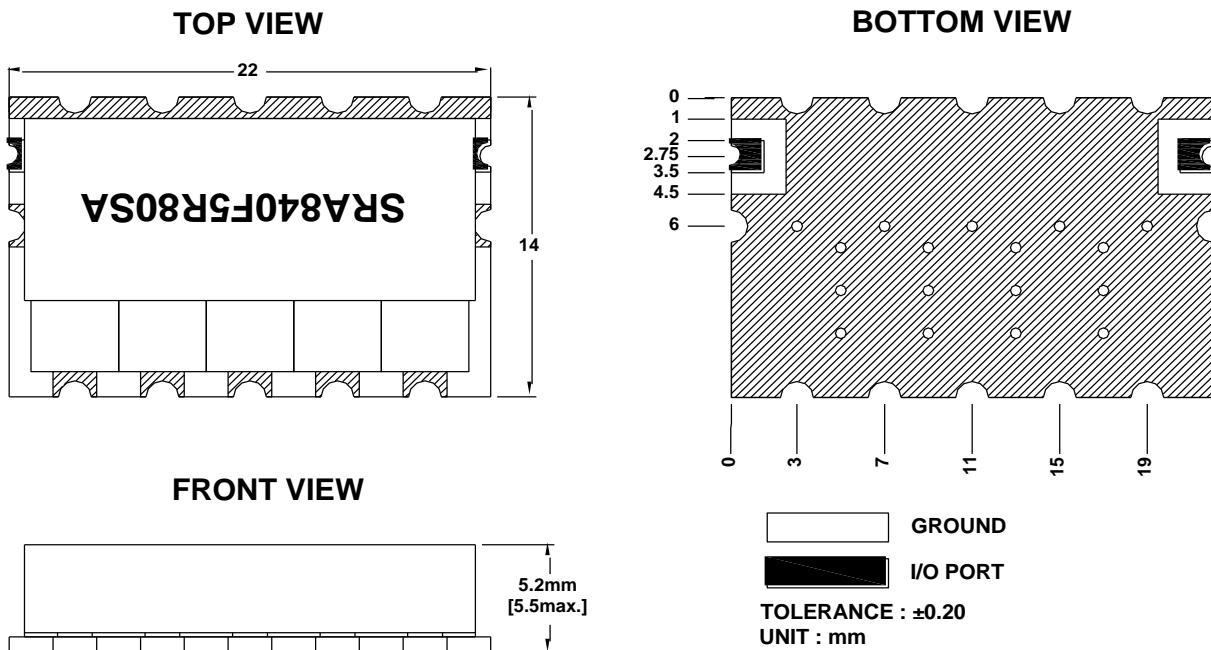


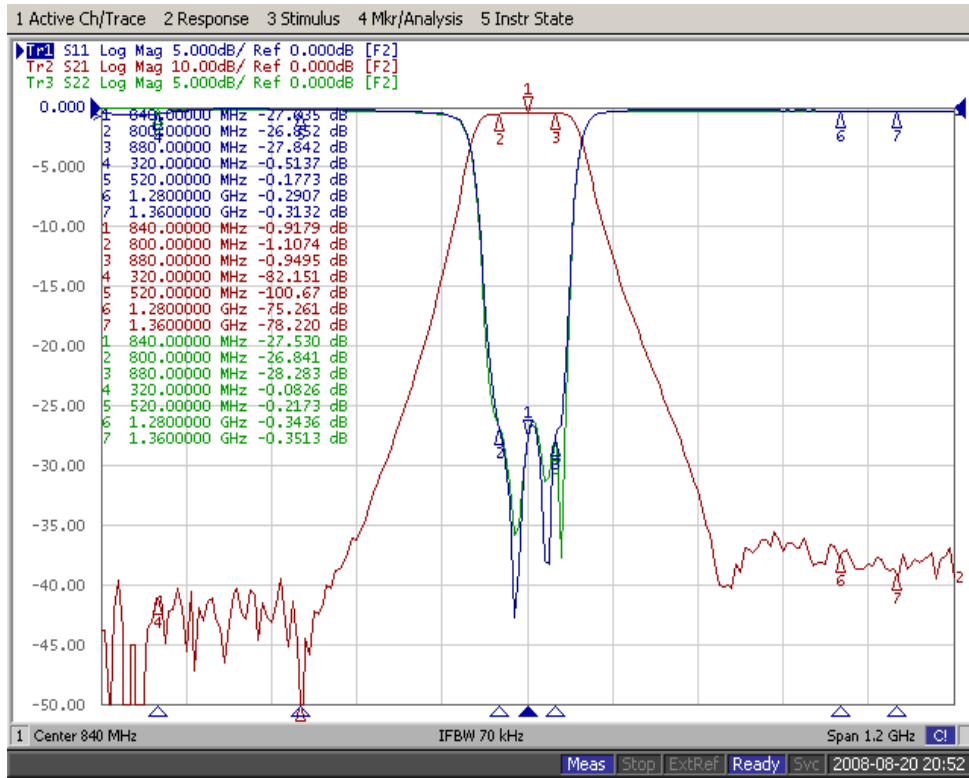
## Electrical Specification

Items	Spec	Unit
Center Frequency [fo]	840.0	MHz
Bandwidth [BW]	$f_o \pm 40.0$ [ 800.0 ~ 880.0 ]	MHz
Insertion Loss in BW	2.0	dB max.
Ripple in BW	0.5	dB max.
Return Loss in BW	15.0	dB min.
V S W R in BW		max.
Attenuation <input checked="" type="checkbox"/> Absolute Value <input type="checkbox"/> Relative Value	45.0 dB min. @ $f_o \pm$ [ 320.0 & 520.0 ]	MHz
	55.0 dB min. @ $f_o \pm$ [ 1280.0 & 1360.0 ]	MHz
	dB min. @ $f_o \pm$ [ & ]	MHz
	dB min. @ $f_o \pm$ [ & ]	MHz
Group Delay Variation		ns max
Input Power		W max.
In/Out Impedance	50 $\Omega$	
Operation Temp. Range	-40°C to +85°C	

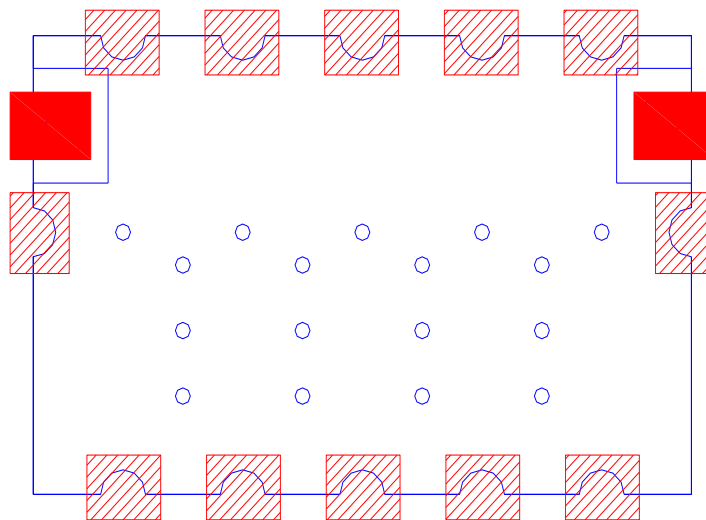
## Mechanical Specification



## Plot Data



## Recommended PC Board Pattern



 **GROUND SOLDERING POINT**

 **I/O PORT SOLDERING POINT**